

VAJRA - M

Elevate Your Mapping Experience



Aerial Mapping Made Efficient with VAJRA-M

VAJRA-M is a high-performance quadcopter drone built for mapping applications equipped with advanced GPS technology and a professional-grade mapping payloads, capture stunning aerial imagery, generate precise maps, and complete complex surveying projects with good flight time, ensuring efficiency and accuracy like never before while being friendly to your budget.

Elevate Your Mapping Experience

- Intelligent Flight Modes and Failsafes
- Multiple Mapping Payload options
- Efficient Flight Time
- High-Precision GPS, PPK and Mapping Capabilities
- User-friendly Ground Control Software

Unlock Aerial Mapping Excellence



40 mins
Max Flight Time



Upto 10 KMs
Operational Range



8 m/s Maximum
Wind Resistance



IP 53
Weather Proof



4 kg Max
Take off Weight



1 Kg
Payload Capacity

PAYLOADS

RGB MAPPING



Sony A6100



Sony RX1R II



Oblique



ADTI 24MP



ADTI 42MP



ADTI 61MP

MULTISPECTRAL



Parrot Sequoia



MicaSense Rededge P



MicaSense Rededge Altum PT

THERMAL



FLIR Vue Pro 336



FLIR Vue Pro 640

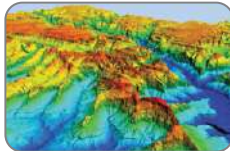
DATA OUTPUTS



Orthomosaic maps



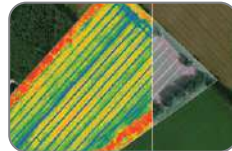
3D point clouds



Digital surface models (DSM)



Thermal map



Multispectral map



Oblique Camera Map

APPLICATIONS



Crop Monitoring,
Vegetation Indexing,
Precision Agriculture.



Aerial Surveys,
3d Modeling,
Progress Tracking.



Forest Management,
Tree Counting,
Environmental Monitoring.



Mining Exploration,
Stockpile Volume Measurement,
Geological Surveys.

Setting Ourselves Apart



5+ Years
of Experience



100+ Projects
Completed

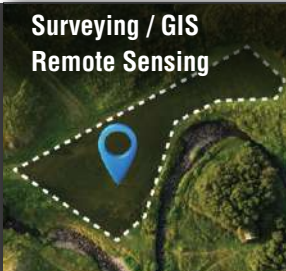


50+ Clients
Served



DGCA Approved
Drones

INDUSTRIES



Surveying / GIS
Remote Sensing



Agriculture



Mining

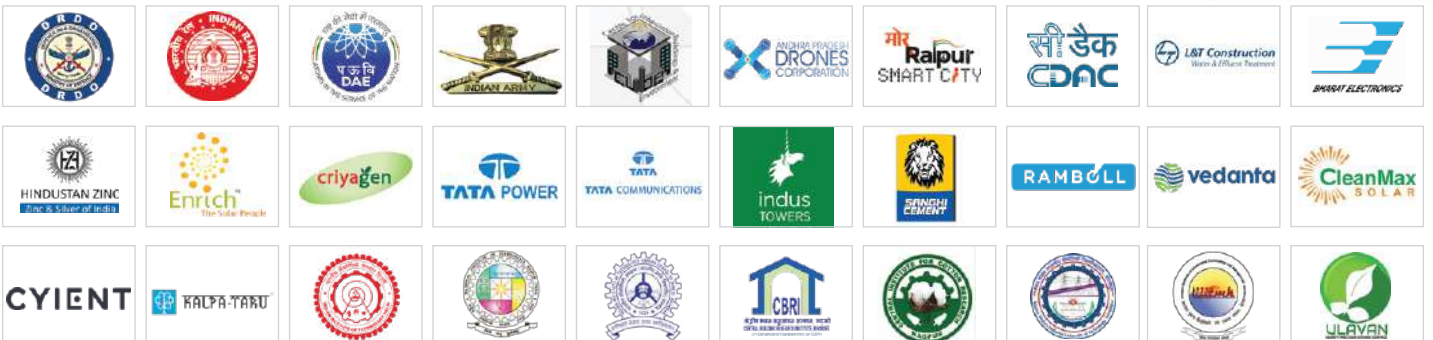


Forestry



Constructions
Infrastructure

CLIENTELE



Dronix Technologies Private Limited

#7, KRJ Building, Third Floor, Welder Street, Mount Road, Chennai, Tamil Nadu, India - 600002.

+91-9962458751 | sales@aero360.co.in | www.aero360.co.in