



VYOMA-M

Skyward Precision, Infinite Perspectives



VYOMA-M



Experience Unparalleled Precision with the all new VYOMA

VYOMA-M is a robust fixed-wing VTOL Drone designed for versatility and endurance. Made of high quality composite material, guarantees both strength and durability. With its long endurance & onboard high-precision GNSS, VYOMA-M covers large areas quickly & collects highly accurate data with multiple payload options.

Powerful Flight Performance



120 + mins
Max Flight Time



15 + KMs
Operational Range



1.5 KG
Payload Capacity



30 m/s
Maximum Speed

Experience Unmatched Performance

- Fully Autonomous
- High Performance and Reliability
- Multiple Mapping Payload options
- Accurate and Seamless Data Acquisition
- Airborne in Minimal Time
- High Accuracy with PPK GNSS

Intelligence Redefined with Safety and Reliability

- Dual airspeed sensors
- Tilt Motor Mechanism
- Smart Terrain Avoidance
- Smart Battery Remaining
- Easy Assembly
- Dual GPS Redundancy
- 2+HR Flight Time
- Swappable payload bay
- Waypoint Based Navigation
- Autonomous Flight

VYOMA specifications

Drone Category	Small Class UAV
Wingspan	213 cm
Wind resistance at flight altitude	12m/s at takeoff and landing & 22m/s during flight
Battery	Lithium-Ion
Operating Frequency	2.4 GHz
Technical Life of AV	500 landings
MTOW	8.5 kg
Flight time	2+ hours (on a single battery)
GNSS Grade	PPK/RTK Enabled onboard GNSS along with Base (Master) GNSS receiver
Failsafes	<ul style="list-style-type: none"> • Return Home on Comms failure • Return Home/Land on low battery • DUAL GPS on-board for GPS failure • Return to Home on High Wind • Smart Low Battery Predictor • Terrain Avoidance
Propulsion	Electric
Maximum Operating Altitude	5000m ASL
Cruise Speed	15 – 19 m/s
Deployment Time	< 1 minutes
Working temperature	-10°C to 55°C
Max payload	1.5 Kg
Landing and Takeoff	VTOL
Communication	15+ Kms
Absolute X, Y, Z accuracy	< 10 cm



PAYLOADS

RGB Mapping



Sony A6100



Sony RX1R II



Oblique



ADTI 24MP



ADTI 42MP



ADTI 61MP

Multispectral



Parrot Sequoia



MicaSense Rededge P



MicaSense Rededge Altum PT

Thermal



FLIR Vue Pro 336



FLIR Vue Pro 640

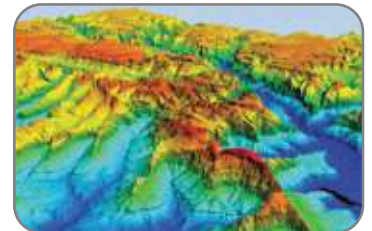
DATA OUTPUTS



Orthomosaic maps



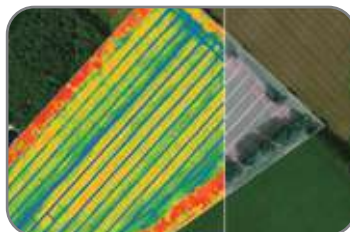
3D point clouds



Digital surface models (DSM)



Thermal map



Multispectral map



Oblique Camera Map

Mapping & Survey

- Get faster and more accurate results.
- Create highly accurate maps and survey points.
- Helps to identify job-site errors, track work progress, predict schedule delays, etc.
- Map Inaccessible Places allowing land surveyors to acquire better and accurate data with safe working conditions.

Applications



Normalized Difference Vegetation Indexing



Volumetric Estimation and 3D Modeling



Hot Spot Detection and Mapping



Topographic Surveying and Mapping

VYOMA-M features for surveying and mapping

- 10X faster data acquisition
- 99% accurate measurement with PPK/RTK. No GCPs needed.
- Larger Area Coverage
- Multiple data collection options with different camera payloads
- Map even the inaccessible areas
- Reliable and Redundant System for Aerial Mapping

INDUSTRIES

Surveying / GIS / Remote Sensing

Agriculture

Mining

Forestry

Constructions / Infrastructure



Setting Ourselves Apart



5+ Years
of Experience



100 + Projects
Completed



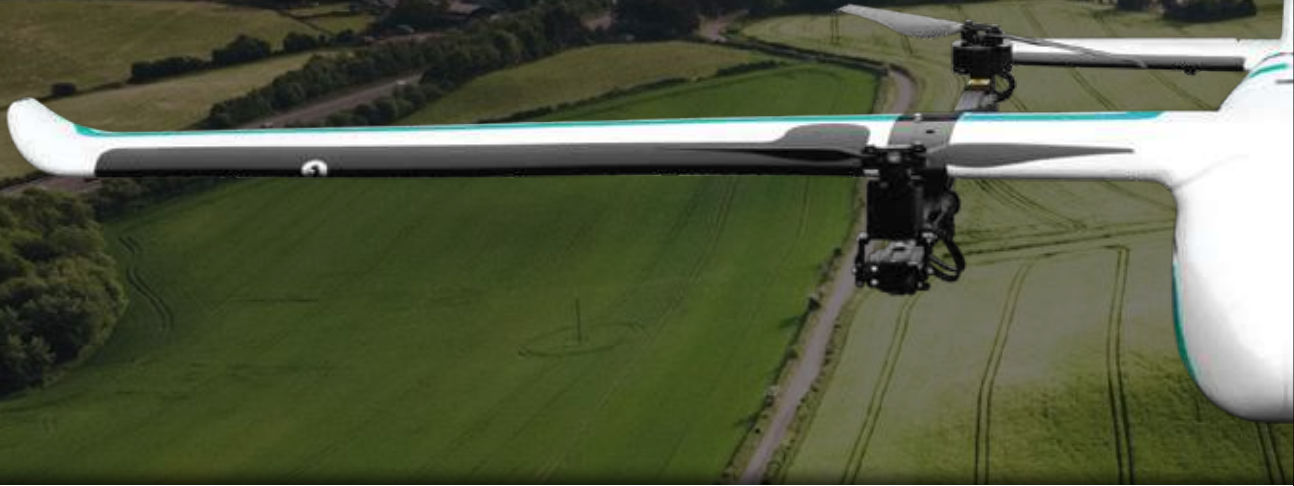
50 + Clients
Served



DGCA Approved
Drones

A Legacy of Excellence

We at Aero360 build state-of-the-art High performance Autonomous Drones designed to suit various applications including Survey & Mapping, Industrial Inspections, Monitoring of Infrastructure and Construction sites, Precision Agriculture, Warehouse Management, Emergency Delivery to Remote Locations, deploying Search & Rescue operations and carrying out Intelligence, Surveillance & Reconnaissance (ISR) missions providing excellent results with efficiency.



Clientele



And many more...

GO BEYOND THE VISUAL LINE OF SIGHT WITH

VYOMA-M



Dronix Technologies Private Limited

#7, KRJ Building, Third Floor, Welder Street, Mount Road,
Chennai, Tamil Nadu, India - 600002.

☎ +91-9962458751 | ✉ sales@aero360.co.in | 🌐 www.aero360.co.in